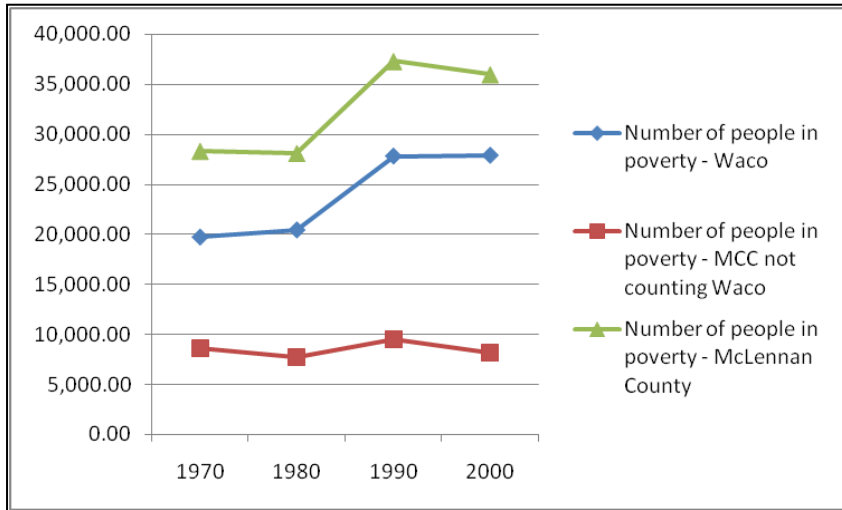
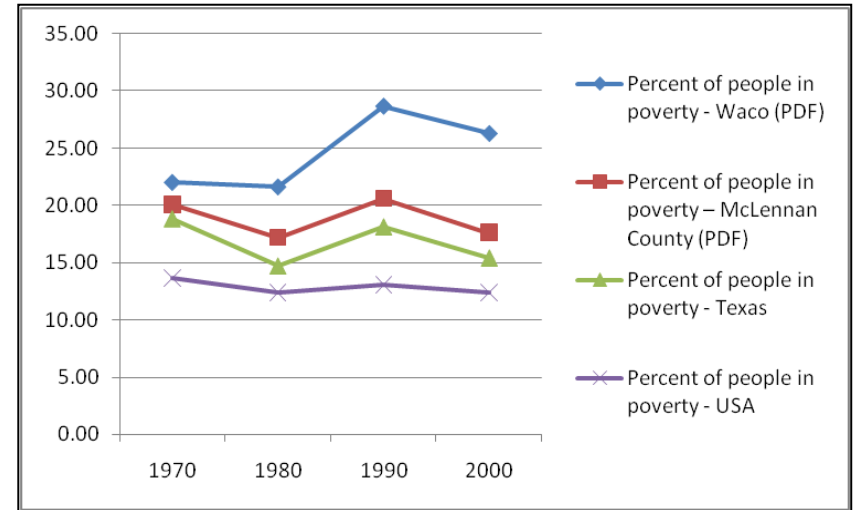


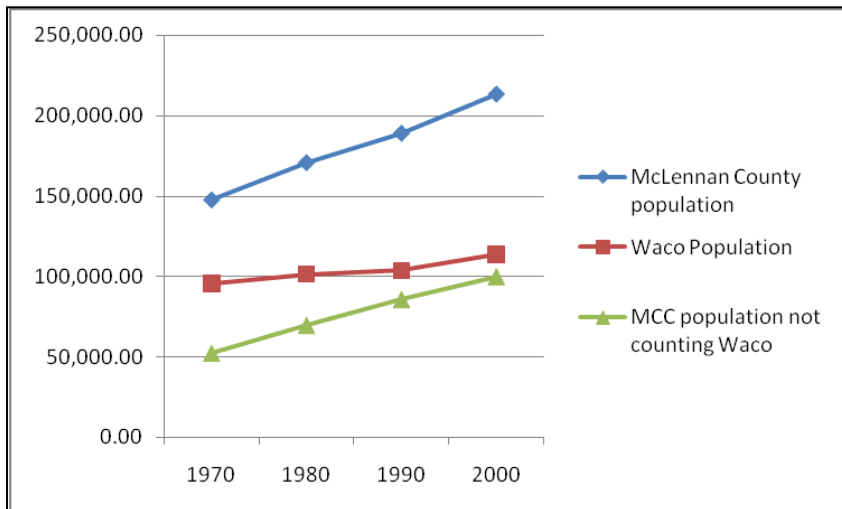
Poverty in Waco: Thirty Year Perspective



Number of People in Poverty



Percentage of People in Poverty



Population

	1970	1980	1990	2000
Waco Population	95,326.00	101,261.00	103,590.00	113,726.00
McLennan County population	147,553.00	170,755.00	189,123.00	213,517.00
MCC population not counting Waco	52,227.00	69,494.00	85,533.00	99,791.00
Number of people in poverty - Waco	19,692.00	20,403.00	27,767.00	27,844.00
Number of people in poverty - MCC not counting Waco	8,623.00	7,690.00	9,529.00	8,133.00
Number of people in poverty - McLennan County	28,315.00	28,093.00	37,296.00	35,977.00
Percent of people in poverty - Waco *	22.00	21.60	28.70	26.30
Percent of people in poverty - McLennan County *	20.10	17.20	20.60	17.60
Percent of people in poverty - Texas	18.80	14.70	18.10	15.40
Percent of people in poverty - USA	13.70	12.40	13.10	12.40

* Percentages of people in poverty are taken from census tables. Percentages are based on the "Population for whom poverty is determined" which is a somewhat smaller number than the total population, so if you used these numbers to calculate the percentages you will get a slightly higher percentage.

Where these numbers came from:

These numbers came from the U.S. Census Bureau Census of Population and Housing (historical and decennial) – which you can pull up from this website:

<http://www.census.gov/prod/www/abs/decennial/index.htm> .

Specifically:**Waco Population**

- 1970 – 1970 Census of Population Texas, Volume I, Part 45, Section I. Characteristics of the Population. Chapter A: Number of Inhabitants. Table 6. Population of Places: 1970 and 1960.
- 1980 – 1980 Census of Population Texas, Volume 1: Characteristics of the Population. Chapter A: Number of Inhabitants. Table 5. Population of Places: 1960 to 1980.
- 1990 – 1990 Census of Population Texas, General Population Characteristics. Section 1. Table 1. Summary of General Characteristics of Persons: 1990.
- 2000 – Texas: 2000, 2000 Census of Population and Housing, Population and Housing Unit Counts. Table 6. Population and Housing Units: 1980 to 2000; and Area Measurements and Density: 2000.

Waco Number and percentage of people in poverty

- 1970 – 1970 Census of Population Texas, Volume I, Part 45, Section I. Characteristics of the Population. Chapter C: General Social and Economic Characteristics. Table 90. Poverty Status in 1969 of Families and Persons for Areas and Places: 1970
- 1980 – 1980 Census of Population Texas, Volume I: Characteristics of the Population, Part 45, Chapter C: General Social and Economic Characteristics. Table 125. Poverty Status in 1979 of Families and Persons for Areas and Places: 1980
- 1990 – 1990 Census of Population Texas, Social and Economic Characteristics. Section 2. Table 178. Poverty Status in 1989 of Families and Persons: 1990
- 2000 – Texas: 2000, 2000 Census of Population and Housing, Summary Social, Economic and Housing Characteristics. Table 16. Poverty Status in 1999: 2000

McLennan County Population

- 1970 – 1970 Census of Population Texas, Volume I, Part 45, Section I. Characteristics of the Population. Chapter A: Number of Inhabitants. Table 9. Population and Land Area of Counties: 1970 and 1960.
- 1980 – Census of Population Texas, Volume 1, Characteristics of the Population. Chapter A: Number of Inhabitants. Table 2. Land Area and Population: 1930 to 1980.
- 1990 – 1990 Census of Population Texas, General Population Characteristics. Section 1. Table 1. Summary of General Characteristics of Persons: 1990.
- 2000 – Texas: 2000, 2000 Census of Population and Housing, Summary Population and Housing Characteristics. Table 1. Age and Sex: 2000.

McLennan County Number and percentage of people in poverty

- 1970 – 1970 Census of Population Texas- Volume I, Part 45, Section I. Characteristics of the Population. Chapter C: General Social and Economic Characteristics. Table 124. Income and Poverty status in 1969 for Counties: 1970.
- 1980 – 1980 Census of Population Texas, Volume I: Characteristics of the Population, Part 45, Chapter C: General Social and Economic Characteristics. Table 181. Poverty Status in 1979 of Families and Persons for Counties: 1980.
- 1990 – 1990 Census of Population Texas, Social and Economic Characteristics. Section 1. Table 149. Poverty Status in 1989 of Families and Persons: 1990.
- 2000 – Texas: 2000, 2000 Census of Population and Housing, Summary Social, Economic and Housing Characteristics. Table 15. Poverty Status in 1999: 2000.

Texas-Percentage of people in poverty

- 1970 – 1970 Census of Population, United States Summary, Characteristics of the Population. Table 182. Poverty Status in 1969 of Families and Persons for Regions, Divisions and States: 1970.
- 1980 - 1980 Census of Population, General Social and Economic Characteristics, Texas. Table 57. Summary of Economic Characteristics: 1980.
- 1990 - 1990 Census of Population, Social and Economic Characteristics, Texas. Table 3. Summary of Occupation, Income, and Poverty Characteristics: 1990.
- 2000 - U.S. Census Bureau, 2000 Census of Population and Housing, Summary Social, Economic, and Housing Characteristics, PHC-2-1, United States Summary. Table 8. Poverty Status in 1999: 2000.

USA – Percentage of people in poverty

- 1970 - U.S. Census Bureau, 1970 Census of Population, United States Summary, Characteristics of the Population. Table 182. Poverty Status in 1969 of Families and Persons for Regions, Divisions and States: 1970.
- 1980 – U.S. Census Bureau, 1980 Census of the Population, United States Summary, General Social and Economic Characteristics Summary of Economic Characteristics: 1980. Table 73. Summary of Economic Characteristics: 1980.
- 1990 - U.S. Census Bureau, 1990 Census of Population, United States, Social and Economic Characteristics. Table 3. Summary of Occupation, Income and Poverty Characteristics: 1990.
- 2000 - U.S. Census Bureau, 2000 Census of Population and Housing, Summary Social, Economic, and Housing Characteristics, PHC-2-1, United States Summary. Table 8. Poverty Status in 1999:2000.